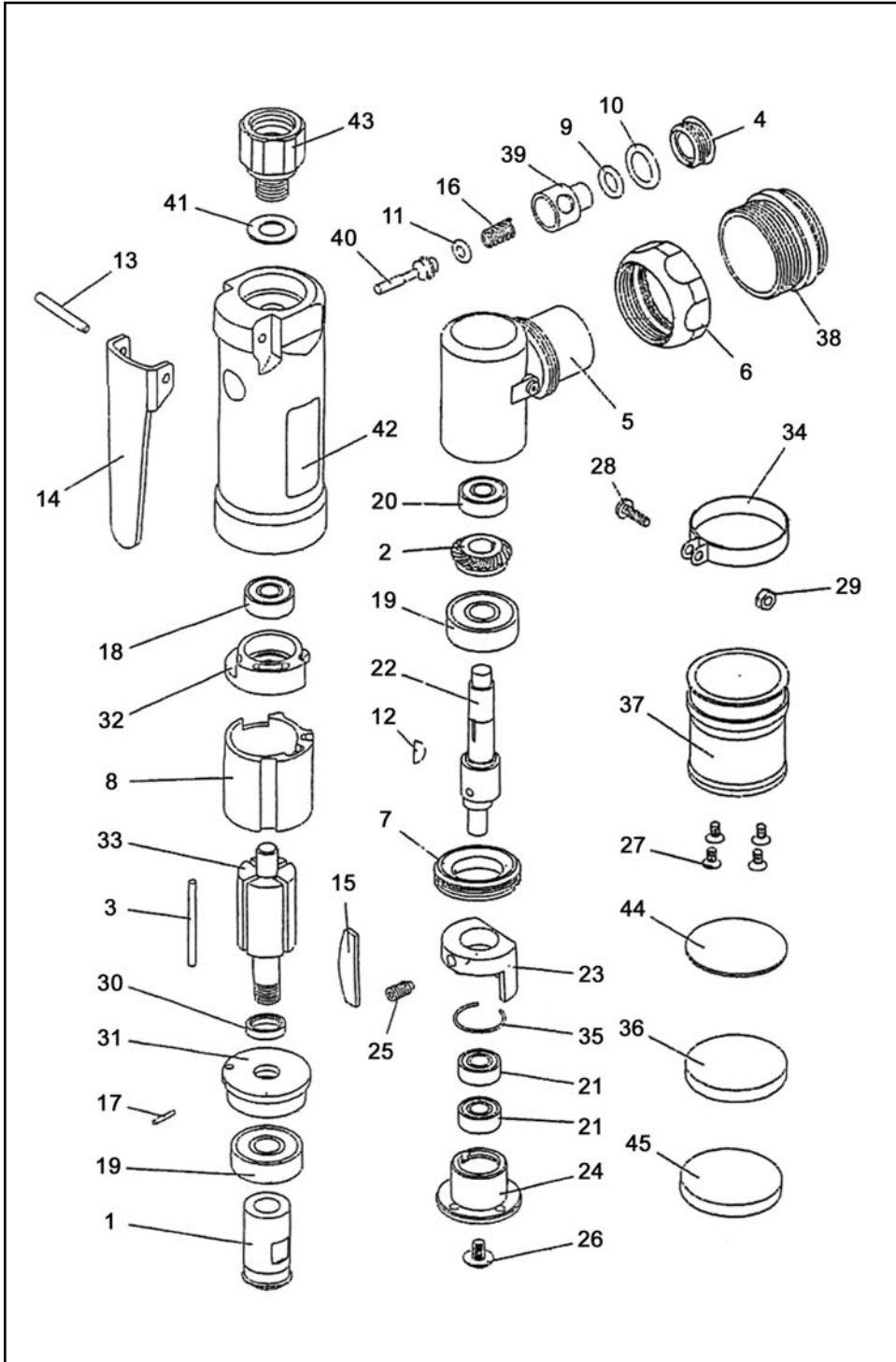


Model 910-3501



9103501.OXD

Model 910-3501

PARTS LIST

ITEM NO.	PART NO.	DESCRIPTION	PER SET QTY.
1	QP3217	Pinion	1
2	QP3336	Gear	1
3	QP3342	Cylinder Pin	1
4	QP3320	Valve Plug	1
5	QP3318	Angle Housing	1
6	QP3319	Cup Ring	1
7	QP3340	Bearing Lock Nut	1
8	QP3210	Cylinder	1
9	QP3323	O-Ring (P7)	1
10	QP3501	O-Ring (P10A)	1
11	QP3321	O-Ring (P4)	1
12	QP3338	H/R Key	1
13	QP3387	Spring Pin (3 x 24)	1
14	QP3401	Lever	1
15	QP3212	Vane	4
16	QP3305	Spring	1
17	QP2286	Pin (Ø 1.2 x 8)	1
18	QP3466	Bearing (R4)	1
19	QP3464	Bearing (608ZZ)	2
20	QP3327	Bearing (696ZZ)	1
21	QP4242	Bearing (686ZZ)	2
22	QP4214	EX Spindle	1
23	QP4215	Balancer	1
24	QP4216	Shoe Bearing Case	1
25	QP4243	Screw (M4 x 8)	1
26	QP4244	Screw (M4 x 6)	1
27	QP4245	Screw (M3 x 5)	4
28	QP4246	Screw (M3 x 10)	1
29	QP4247	Nut (M3)	1
30	QP3812	Spacer	1
31	QP4272	Front Plate	1
32	QP4375	Rear Plate	1
33	QP4260	Rotor	1
34	QP4261	Skirt Band	1
35	QP4262	Snap Ring	1
36	QP4274	Stickon Pad (Ø 31mm)	1
37	QP4264	Rubber Case	1
38	QP4266	Lock Ring	1
39	QP4267	Regulator	1
40	QP4268	Valve Stem	1
41	QP4273	Muffler	1
42	QP4270	Body Assy	1
43	QP4271	Inlet Bushing	1
44	QP4276	Velcro Base (Ø 31mm)	1
45	QP4276CP	Micro Cushion Pad (Ø 31mm)	1

4025 Steve Reynolds Blvd. Norcross, GA 30093
 Tel:(770)279-8111 • Fax:(770)279-0727
 www.EagleAbrasives.com



Maintenance Suggestions:

● OILING

The most common problem that can cause Sander to stop running is lack of lubrication. After each use, it is very important to oil the motor just before storage, because it can protect from problems that are commonly associated with corrosion build up.

● CLEANING

Since dust from air line can easily be siphoned into the motor, it is important to clean your Sander periodically.

● COMPRESSOR FILTER

Proper filtration is necessary to keep water and dust from siphoning into the sander's motor which can cause problem.

● AIR PRESSURE

Air pressure should be kept between 58 and 87 psi to prevent damage to bearings and other parts.

● BEARINGS

Bearings in Sander are subject to wear and must be replaced when needed. Life expectancy of bearings depends on the methods and how often the sander is being used. The following situations may require bearings to be replaced sooner:

1. Excessive moisture in Air-Supply.
2. Continuous use for long periods of time each day .
3. Higher than normal air pressure.
4. Using the sander mostly with coarser grits abrasive paper.

When Sander is running slower or noisier than normal without apparent reason, it is usually an indication of bad bearings.

Specifications: Model no: 3501 Part no: 910-3501

Part No.	Speed (RPM)	Weight	Consumption	Air Pressure	Air Noise Level
910-3501	8,500	1.0 lbs/0.47 kgs	4.94 CFM	58-87 psi	75 dBA

Eagle Abrasives, Inc.
Tel: (770)279-8111

4025 Steve Reynolds Blvd., Norcross, GA 30093, U.S.A.
Fax: (770)279-0727

www.EagleAbrasives.com

Congratulations!
on your purchase of the
Touch-Up Sander
Model 3501.
With proper care and maintenance,
it should provide you with years
of trouble free usage.
Please be sure to
read carefully
the maintenance suggestions inside
before using the sander.

Part No	Grit	Discs Per Sleeve	Sleeves Per Case
Eagle Stickon Waterproof Touch-Up Discs (1 3/8" Dia.)			
880-1000	P1000	100	20
880-1500	P1500	100	20
880-2000	P2000	100	20
880-2501	<P2500	100	20
Eagle Stickon Yellow-Film Touch-Up Discs (1 3/8" Dia.) - Dry Sanding Only			
881-1500	P1500	100	20
Eagle SUPER-TACK Touch-Up Discs (1 3/8" Dia.)			
AJ2-1000	P1000	100	20
AJ2-1200	P1200	100	20
AJ2-1500	P1500	100	20
AJ2-2000	P2000	100	20
Eagle SUPER-TACK Buflex Touch-Up Discs (1 3/8" Dia.)			
194-1501	<P3000	100	10
194-1502	<P2500	100	10
Eagle SUPER-TACK Touch-Up Cushion Pads (1 1/4" Dia.)			
971-0024		5	10