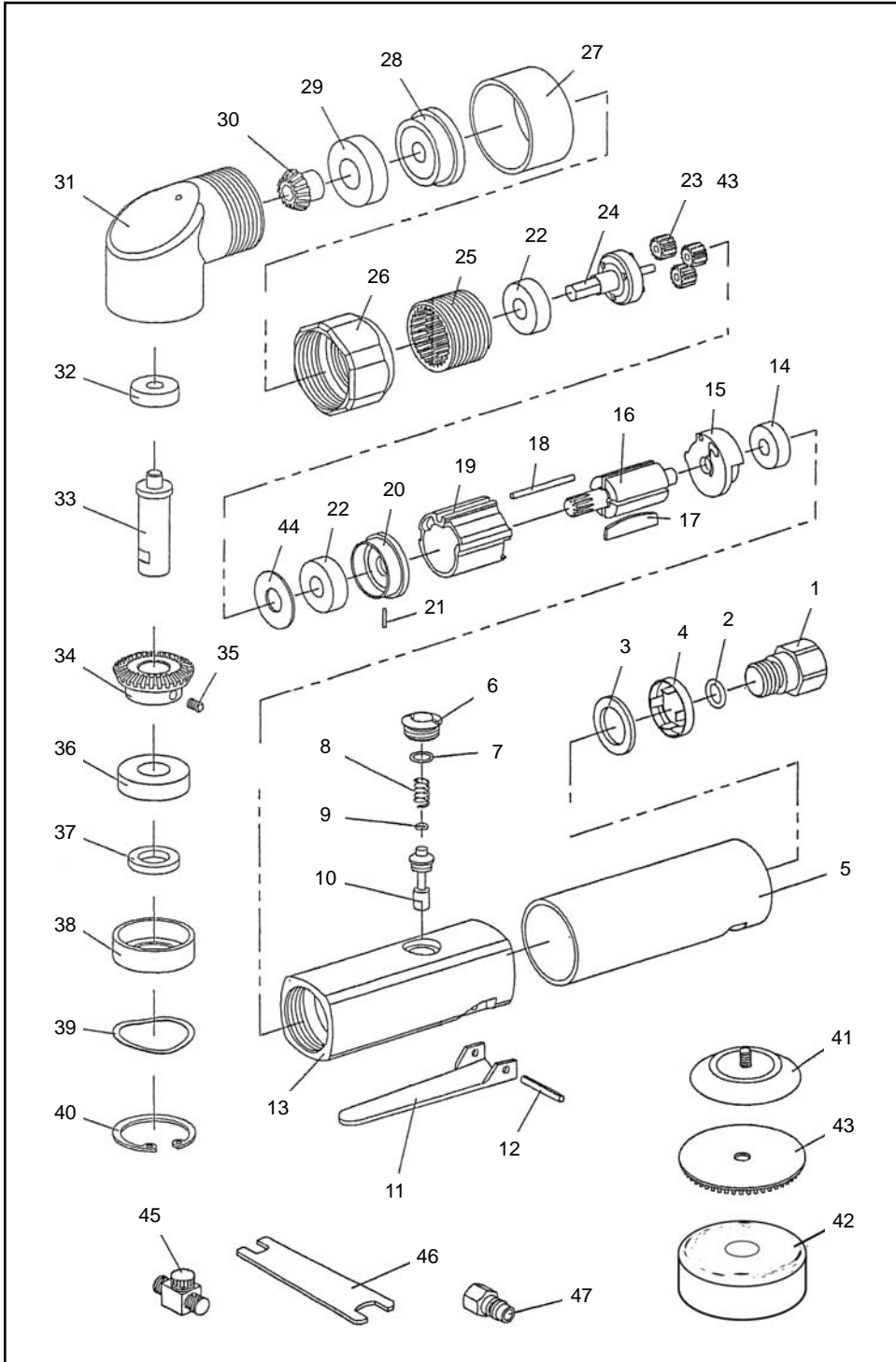


# Model 910-0301

# PARTS LIST



ITEM NO.	PART NO.	DESCRIPTION	PER SET QTY.
1	QP4363	Inlet Bushing	1
2	QP4368	O-Ring (P10)	1
3	QP2589	Muffler	1
4	QP4361	Silencer	1
5	QP4359	Body Cover	1
6	QP2409	Valve Plug	1
7	QP3302	O-Ring (P8)	1
8	QP2408	Valve Spring	1
9	QP3321	O-Ring (P4)	1
10	QP4366	Valve Stem	1
11	QP3401	Throttle Lever	1
12	QP3387	Spring Pin (3x24)	1
13	QP4374	Body	1
14	QP3466	Bearing (R4ZZ)	1
15	QP4375	U-Bearing case	1
16	QP2537	Rotor	1
17	QP3212	Vane	4
18	QP3342	Cylinder Pin	1
19	QP3210	Cylinder	1
20	QP2539	L Bearing Case	1
21	QP2286	Spring Pin (1.2x8)	1
22	QP3464	Bearing (608ZZ)	1
23	QP4371	Idle Gear	1
24	QP4352	Spindle with Needles	1
25	QP4351	Internal Gear	1
26	QP4356	Lock Nut	1
27	QP4358	Nut Cover	1
28	QP4355	Spacer	2
29	QP2450	Bearing (608ZZ)	3
30	QP3383	Pinion	1
31	QP4360	Angle Housing	1
32	QP3310	Bearing (626ZZ)	1
33	QP4353	Spindle	1
34	QP4350	Bevel Gear	1
35	QP3379	Set Screw (M4x6)	1
36	QP4369	Bearing (6001LU)	1
37	QP4357	Dust Seal	1
38	QP4354	Bearing Cover	1
39	QP1210	Wave washer (WW-23)	1
40	QP1211	Retainer Ring	1
41	QP5505	Backup Pad (72mm Dia.)	1
42	P4045	Yellow Foam Pad	1
43	P4047	Wool Pad (5x80)	1
44	QP4372	Needle Roller (0.95x6.8)	39
45	QP4373	Thrust Plate	1
46	QP4362	Regulator	1
47	QP3113	Chuck Wrench	1
48	QP5001	Coupler	1



4025 Steve Reynolds Blvd.  
 Norcross, GA 30093  
 Tel:(770)279-8111 • Fax:(770)279-0727  
 www.EagleAbrasives.com

### Polishes Available

Part No.	Description
04038	32 oz. Polex Super Polishing System
04024	32 oz. Micro Finishing Liquid Compound
04050	32 oz. Micro Finishing Machine Glaze
04055	32 oz. Micro Finishing Hand Glaze

9100301.OXD

## Maintenance Suggestions:

### ● OILING

The most common problem that can cause Polisher to stop running is lack of lubrication. After each use, it is very important to oil the motor just before storage, because it can protect from problems that are commonly associated with corrosion build up.

### ● CLEANING

Since dust from air line can easily be siphoned into the motor, it is important to clean your Polisher periodically.

### ● COMPRESSOR FILTER

Proper filtration is necessary to keep water and dust from siphoning into the Polisher's motor which can cause problem.

### ● AIR PRESSURE

Air pressure should be kept between 58 and 87 psi to prevent damage to bearings and other parts.

### ● BEARINGS

Bearings in Polisher are subject to wear and must be replaced when needed. Life expectancy of bearings depends on the methods and how often the polisher is being used. The following situations may require bearings to be replaced sooner:

1. Excessive moisture in Air-Supply.
2. Continuous use for long periods of time each day .
3. Higher than normal air pressure.

When Polisher is running slower or noisier than normal without apparent reason, it is usually an indication of bad bearings.

Specifications:

Model no: 0301

Part no: 910-0301

Part No.	Speed (RPM)	Weight	Consumption	Air Pressure	Air Noise Level
910-0301	2,500	1.54 lbs/0.7 kgs	12.36 CFM	58-87 psi	80 dBA

Eagle Abrasives, Inc.  
Tel: (770)279-8111

4025 Steve Reynolds Blvd., Norcross, GA 30093, U.S.A.  
Fax: (770)279-0727

[www.EagleAbrasives.com](http://www.EagleAbrasives.com)

*Congratulations!*  
on your purchase of the  
Kovax Mini Polisher  
Model 0301.  
With proper care and maintenance,  
it should provide you with years  
of trouble free usage.  
Please be sure to  
*read carefully*  
the maintenance suggestions inside  
*before using the sander.*