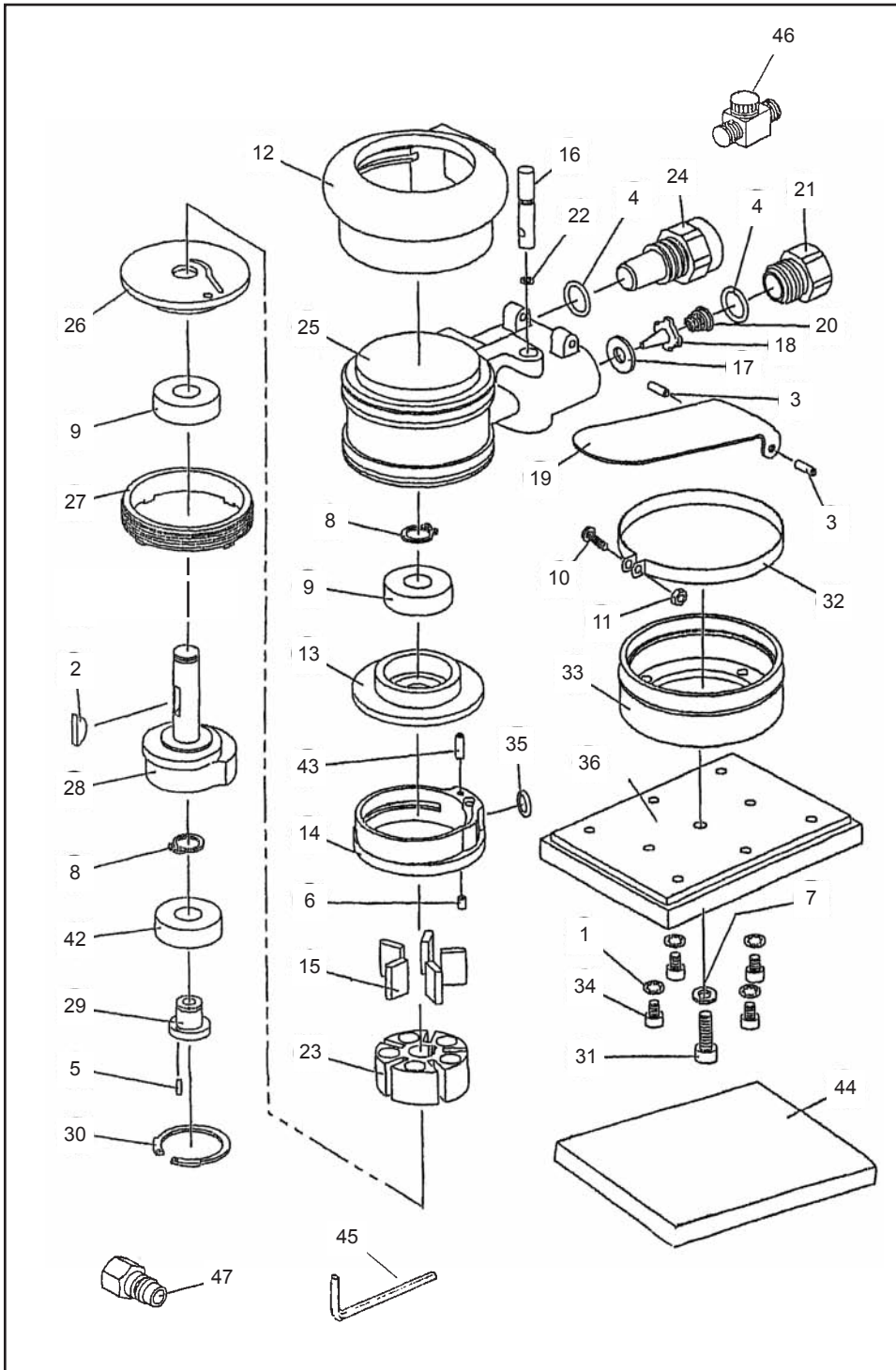


Model 910-0202B



Model 910-0202B

PARTS LIST

ITEM NO.	PART NO.	DESCRIPTION	PER SET QTY.
1	QP1244	Washer	4
2	QP1427	H/R Key	1
3	QP2668	Spring Pin (3 x 10)	2
4	QP2211	O-Ring (P11)	2
5	QP2301	Spring Pin (2 x 5)	1
6	P410305	Spring Pin (3 x 5)	1
7	QP3128	Spring Washer	1
8	QP3253	Snap Ring (STW-10)	2
9	P6000ZZ	Bearing (6000ZZ)	2
10	QP4246	Screw (M3 x 10)	1
11	QP4247	Nut (M3)	1
12	QP4401	Body Cover	1
13	QP4404	U-Bearing Case	1
14	QP4405	Cylinder	1
15	QP4406	Vane	5
16	QP4414	Valve Stem	1
17	QP4415	Seal Washer	1
18	QP4416	Tip Valve	1
19	QP4417	Valve Lever	1
20	QP4418	Valve Spring	1
21	QP4419	Inlet Bushing	1
22	QP4420	O-Ring (1.0 x 4)	1
23	QP4431	Rotor	1
24	QP4432	Muffer Assy	1
25	QP4447	Body	1
26	QP4404	L-Bearing Case	1
27	QP4449	Lock Ring	1
28	QP4450	Shaft	1
29	QP4453	Balancer Shaft	1
30	QP4455	Snap Ring (RTW-26)	1
31	QP1504	Hex. Bolt (M5 x 15)	1
32	QP4457	Skirt Band	1
33	QP4459	Rubber Cover	1
34	QP4712	Hex. Bolt (M4 x 8)	4
35	PK505	O-Ring (KS5)	1
36	QP5572	Backup Pad (71 x 106)	1
42	QP4473	Bearing (6000RS)	1
43	QP2668	Spring Pin (3 x 10)	1
44	9710061	Interface Pad (Special Cushion Pad)	1
45	QP4463	Hex Wrench (4 mm)	1
46	P62A	Regulator	1
47	QP5001	Coupler	1

9100202B.QXD

4025 Steve Reynolds Blvd. Norcross, GA 30093
 Tel:(888)683-2453 • Fax:(888)643-2453
 www.EagleAbrasives.com



Maintenance Suggestions:

● OILING

The most common problem that can cause Sander to stop running is lack of lubrication. After each use, it is very important to oil the motor just before storage, because it can protect from problems that are commonly associated with corrosion build up.

● CLEANING

Since dust from air line can easily be siphoned into the motor, it is important to clean your Sander periodically.

● COMPRESSOR FILTER

Proper filtration is necessary to keep water and dust from siphoning into the sander's motor which can cause problem.

● SANDING PADS

If the pad rotates undulantly, or it is deformed or cracked, it should be changed right away. The following is our suggested method for changing the pad.

1. Remove the air hose from the Sander.
2. Insert the attached spanner to the new pad.
3. Rotate the pad counter-clockwise.

● AIR PRESSURE

Air pressure should be kept at 90 psi or lower to prevent damage to bearings and other parts.

● BEARINGS

Bearings in Sander are subject to wear and must be replaced when needed. Life expectancy of bearings depends on the methods and how often the sander is being used. The following situations may require bearings to be replaced sooner:

1. Excessive moisture in Air-Supply.
2. Continuous use for long periods of time each day .
3. Higher than normal air pressure.
4. Using the sander mostly with coarser grits abrasive paper.

When Sander is running slower or noisier than normal without apparent reason, it is usually an indication of bad bearings.

Specifications: Model no: KO-202B Part no: 910-0202B

Part No.	Speed (RPM)	Weight	Consumption	Air Pressure	Air Noise Level
910-0202B	8,500	1.6 lbs/0.74 kgs	12 CFM	58-87 psi	78 dBA

Eagle Abrasives, Inc.
Tel: (888)683-2453

4025 Steve Reynolds Blvd., Norcross, GA 30093, U.S.A.
Fax: (888)643-2453

www.EagleAbrasives.com

before using the sander.
the maintenance suggestions inside

read carefully

Please be sure to

of trouble free usage.

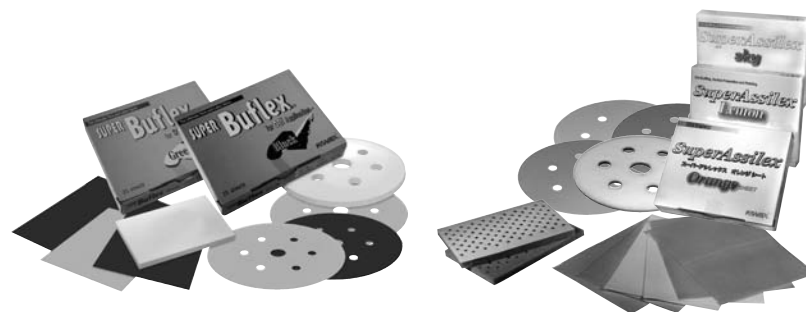
it should provide you with years,
With proper care and maintenance,

Model KO-202B.

Super Assilex/Super Buflex Sander

on your purchase of the

Congratulations!



Part No.	Description	Finish Equivalent	Pieces Per Unit	Units Per Case
Eagle Super Assilex Sheets				
191-1508	Super Assilex Sky	>P500	25	8
191-1509	Super Assilex Lemon	>P800	25	8
191-1510	Super Assilex Orange	>P1500	25	8
971-0035	Interface Pad	--	4	8
Eagle Super Buflex Sheets				
191-1531	Dry Buflex Sheet (Black)	>P3000	25	8
191-1532	Dry Buflex Sheet (Green)	>P2500	25	8
971-0061	Interface Pad	--	2	6