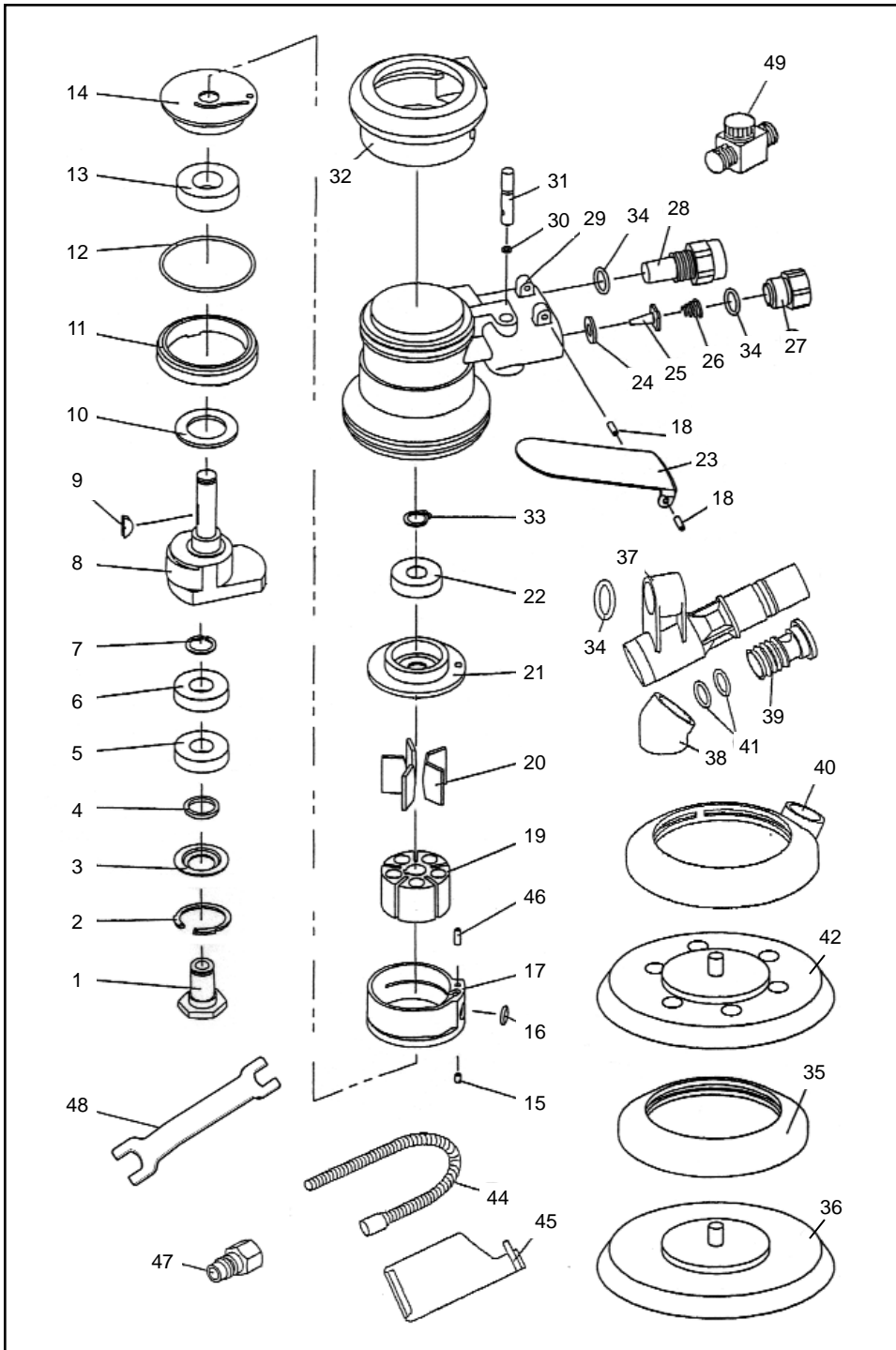


Kovax D/A Sander Model 910-0102/910-0102D

PARTS LIST



ITEM NO.	PART NO.	DESCRIPTION
1	QP4411	Balancer Shaft
2	QP4424	Snap Ring (IRTW-28)
3	QP4413	Felt Cover
4	QP4412	Felt Ring
5	QP4369	Bearing (6001LU)
6	P6001DD	Bearing (6001)
7	QP2577	Snap Ring (ISTW-12)
8	QP4402	Shaft
9	QP1427	H/R Key
10	QP4410	Dust Seal
11	QP4408	Lock Ring
12	QP4421	O-Ring (AS568-032)
13	QP4425	Bearing (6002ZZ)
14	QP4403	L-Bearing Case
15	P410305	Spring Pin (3x5)
16	PKS05	O-Ring (KS5)
17	QP4405	Cylinder
18	QP1449	Spring Pin (3x10)
19	QP4431	Rotor
20	QP4406	Vane
21	QP4404	U-Bearing Case
22	P6000ZZ	Bearing (6000ZZ)
23	QP4417	Valve Lever
24	QP4415	Seal Washer
25	QP4416	Tip Valve
26	QP4418	Valve Spring
27	QP4419	Inlet Bushing
28	QP4432	Muffler Assy.
29	QP4400	Body
30	QP4420	O-Ring (1x4)
31	QP4414	Valve Stem
32	QP4401	Body Cover
33	QP3253	Retainer Ring (STW-10)
34	QP2211	O-Ring (P11)
35	QP4422	Hood
36/1	P3260	6" SUPER-TACK Backup Pad
36/2	P3160	6" Stickon Backup Pad
37	QP4434	Ejector Body*
38	QP4435	Ejector Adapter*
39	QP4436	Ejector Plug*
40	QP4423	Hood (Vacuum Assist)*
41	QP4438	O-Ring (S14)*
42/1	P3266	6" SUPER-TACK Backup Pad (6 Holes)*
42/2	P3166	6" Stickon Backup Pad (6 Holes)*
44	QP4443	Duct Hose*
45	QP4445	Dust Bag*
46	QP2668	Spring Pin (Ø3x10)
47	QP5001	Coupler
48	P288292	Spanner
49	P62A	Air Control Valve

*Parts for Vacuum assist sander only (Part No. 910-0102D).

910-0102.QXD



4025 Steve Reynolds Blvd. Norcross, GA 30093
 Tel: (770) 279-8111 • Fax: (770) 279-0727
 www.EagleAbrasives.com

Maintenance Suggestions:

●OILING

The most common problem that can cause Sander to stop running is lack of lubrication. After each use, it is very important to oil the motor just before storage, because it can protect from problems that are commonly associated with corrosion build up.

For Longer Life of air tool, it's recommended to supply 2 or 3 drops of spindle oil into the air inlet on a daily after usage.

●CLEANING

Since dust from air line can easily be siphoned into the motor, it is important to clean your Sander periodically. The following is our suggested method for cleaning the motor:

1. Supply spindle oil. In case of no improvement, the sander should be repaired.

●COMPRESSOR FILTER

Proper filtration is necessary to keep water and dust from siphoning into the sander's motor which can cause problem.

●SANDING PADS

If the pad rotates undulantly, or it is deformed or cracked, it should be changed right away. The following is our suggested method for changing the pad.

1. Remove the air hose from the Sander.
2. Insert the attached spanner to the new pad.
3. Rotate the pad counter-clockwise.

●AIR PRESSURE

Air pressure should be kept between 57 - 87 psi to prevent damage to bearings and other parts.

●BEARINGS

Bearings in Sander are subject to wear and must be replaced when needed. Life expectancy of bearings depends on the methods and how often the sander is being used. The following situations may require bearings to be replaced sooner:

1. Excessive moisture in Air-Supply.
2. Continuous use for long periods of time each day .
3. Higher than normal air pressure.
4. Using the sander mostly with coarser grits abrasive paper.

When Sander is running slower or noisier than normal without apparent reason, it is usually an indication of bad bearings.

Specifications: Model: KD-0102 Part no: 910-0102/910-0102D

Part No.	Speed (RPM)	Orbital Dia.	Weight	Air Consumption	Air Pressure	Noise Level
910-0102	10,000	5 mm	1.98 lbs/0.90 kgs	13.4 CFM	57-87 psi	78 dBA
910-0102D	8,500	5 mm	2.05 lbs/0.93 kgs	13.4 CFM	57-87 psi	82 dBA

Congratulations!

on your purchase of the
Dual Action Palm Sander Model KD-0102.
With proper care and maintenance,
it should provide you with years of trouble free usage.

Please be sure to
read carefully
the maintenance suggestions inside
before using the sander.

Abrasive Discs Available in 6 inches:

● = No Hole ○ = 6 Holes Vacuum

DESCRIPTION	GRIT PART#	40	50	60	80	100	120	150	180	220	240	280	320	360	400	600	800	1000	1200	1500	2000
		6" High Perform. SUPER-TACK PF Discs	565- 566-				●	●	●	●	●	●	●	●	●	●	●	●			
6" Maxcut SUPER-TACK Discs	562- 563-		●	●	●	●	●														
6" Maxcut Stickon Discs	610-		●		●		●														
6" Non Stickon Discs	560- 561-	●			●	●															
6" Stickon Discs	660-	●		●	●	●															
	661-					●	●	●	●	●	●	●	●	●	●	●					
	662-	○	○	○	○	○	○														
	663-							○	○	○	○	○	○	○	○	○					
6" PS Stickon Discs	666-	●		●	●	●															
	667-					●	●	●	●	●	●	●	●	●	●	●					
	668-	○			○	○	○														
6" Stickon Disc Rolls	860-				●	●	●														
	864-							●	●	●	●	●	●	●	●	●					
6" PS SUPER-TACK Discs	760-	●			●	●	●														
	763-	○			○	○	○														
6" SUPER-TACK Discs	761-							●	●	●	●	●	●	●	●	●					
	764-							○	○	○	○	○	○	○	○	○					
6" SUPER-TACK Yellow-Film Discs	778-																	●	●	●	●
	779-																	○	○	○	○
6" Tolex Discs	192-1503	Finish Equivalent: > P2000																			
6" Buflex Discs	192-1502	Finish Equivalent: > P2500																			
	192-1501	Finish Equivalent: > P3000																			